



中國浩遠
CHINA HYWAY

Wáng Jíng

Commercial Chief Representative for Asian Region
Executive Director of Hyway Group (Thailand) Co., Ltd
Standing Deputy GM of Hyway Group (Malaysia) Sdn.Bhd.

CHINA HYWAY GROUP LIMITED

Add: House No 13A, Lot279, Jalan Taman Formosa, Taman Formosa
PH 1B Stage 1, Bundusan, Kota Kinabalu, Sabah, Malaysia.
Tel: +60 887 1581 1 (Malaysia) Fax: +60 887 2081 1 (Malaysia)
H/P: +60-109-5993-11 (Malaysia) +86-139-1129-3691 (China)
E-mail: wangjing@hyway-china.com Website: www.hyway-china.com



中國浩遠
CHINA HYWAY

王 璟

亞洲首席商務代表
泰國浩遠集團有限公司執行董事
浩遠集團(馬來西亞)有限公司常務副總經理

中國浩遠集團有限公司

地址: 中國·北京市朝陽區東三環中路7號北京財富中心3501B
中國·香港中環皇后大道中30號娛樂行30-31樓
電話: +60 887 1581 1 (馬來西亞) 傳真: +60 887 2081 1 (馬來西亞)
手機: +60-109-5993-11 (馬來西亞) +86-139-1129-3691 (中國)
郵箱: wangjing@hyway-china.com 網址: www.hyway-china.com

CHINA HYWAY GROUP LIMITED

Visit

HC PRECAST SYSTEM FACTORY

(100 % Malaysia Technology With 5 IP)

IBS Superstructure In Malaysia 3 in 1

Load bearing wall + Modular shear keys (wet joint) + Box system

30-12-2017

Industrialised Building System (IBS) is a system not a machine or component .

Open System and Proprietary System is a Technology .

Factory address :

Lot 1, Jalan Zurah 8, Pusat Perindustrian Zurah Mukim Rasa,
Daerah Hulu Selangor. 44200 Rasa , Selangor Darul Ehsan

HC PRECAST SYSTEM

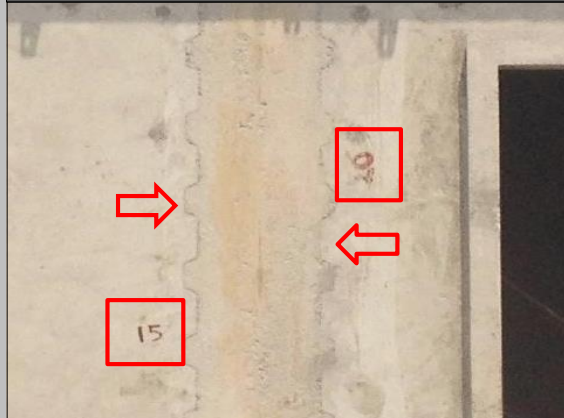
(100 % Malaysia Technology With 5 IP)

IBS Superstructure In Malaysia 3 in 1

Load bearing wall



Modular shear keys (wet joint)



Box system



LIVE!!

Stay tuned for the construction progress of single storey Semi-D show unit on our website (www.hcprecast.com) from 1st April 2018 onwards.

The superstructure (frame & walls) will be completed in only 7 days by 6 workers.

Factory address : Lot 1, Jalan Zurah 8, Pusat Perindustrian Zurah Mukim Rasa, Daerah Hulu Selangor. 44200 Rasa , Selangor Darul Ehsan

Cost Saving

HC Precast System vs Competitor

Training unit : - 9 years expose precast wall, precast staircase, half slab & precast beam with in-situ column.

- No Maintenance
- No Touch-up
- No Water proofing
- No Leaking
- No crack

HC Precast System



- No Debris Clearing - Over View



Training Unit Inspection



Training Unit Inspection



Question & Answer Session



Question & Answer Session



Question & Answer Session



Question & Answer Session



Question & Answer Session



Question & Answer Session



Training Unit Inspection



Question & Answer Session



Question & Answer Session



Shear Key Wet Joint : L-Shape, T-Shape & I-Shape



Shear Key Wet Joint : L-Shape, T-Shape & I-Shape



Shear Key Wet Joint : L-Shape, T-Shape & I-Shape



Production Sequence – Groove Line & Coping One Cast



Production Sequence – Groove Line & Coping One Cast



Production Sequence – Groove Line & Coping One Cast



Production Sequence – Groove Line & Coping One Cast



Production Sequence – Groove Line & Coping One Cast



Heading to Engineering Section



Heading to Engineering Section



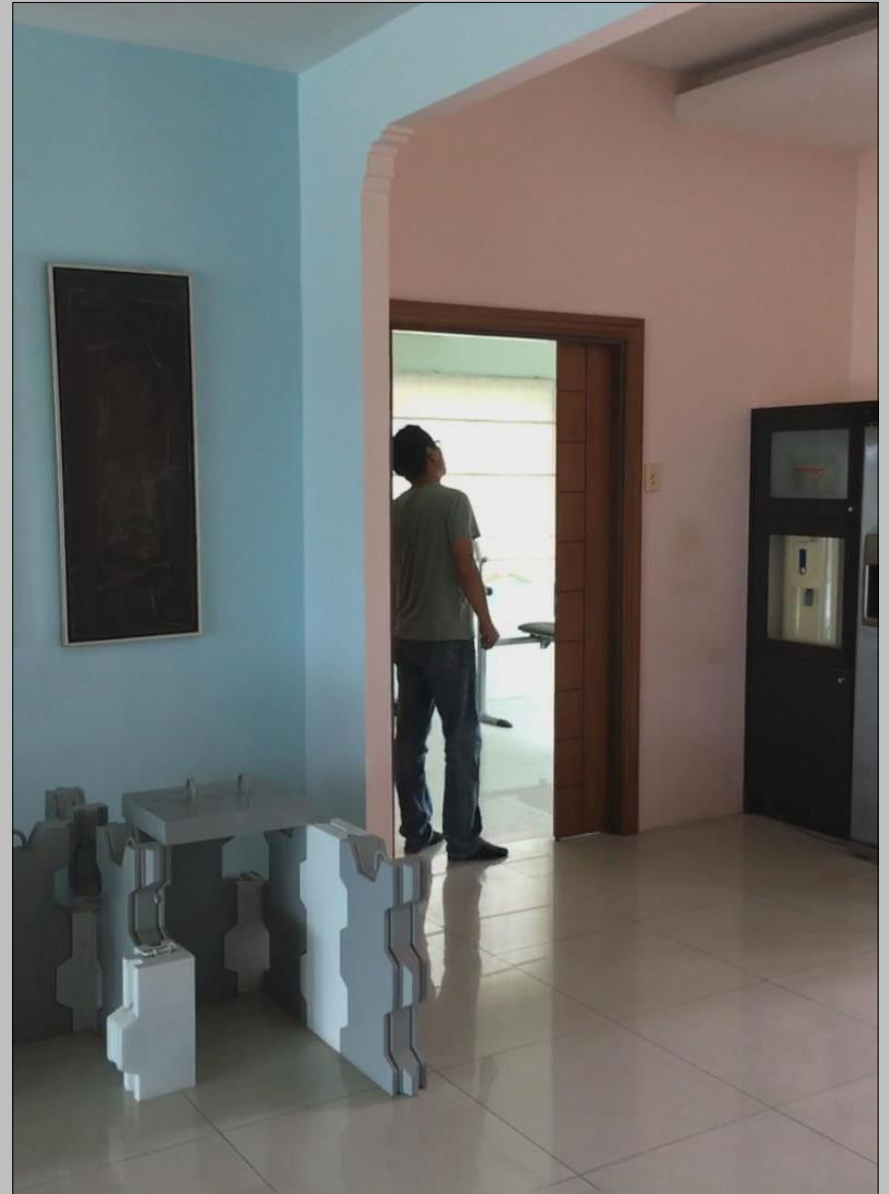
Staircase Demo – Installation & Dismantle of Mould (4 Minutes)



Question & Answer Session



Question & Answer Session



Question & Answer Session



Question & Answer Session



THANK YOU
DESIGN BY YOU
PRODUCE BY HC